



Base Mapping



**Procuring quality data that drives
project outcomes.**

Product Vision

To acquire precise data for specialized projects.





Client Benefits

- Aligning project needs and smart data acquisition.
- Invest in the products that your project really needs.
- Have confidence in the accuracy of what you are using.





Key Features



- Base mapping at a scale of 1" = 50'
- Accuracy meets or exceeds National Map Accuracy Standards
- Orthoimagery – accurate picture of the ground
- Planimetric data – digital representation of manmade features
- Topography – 1' contours

Target Audience



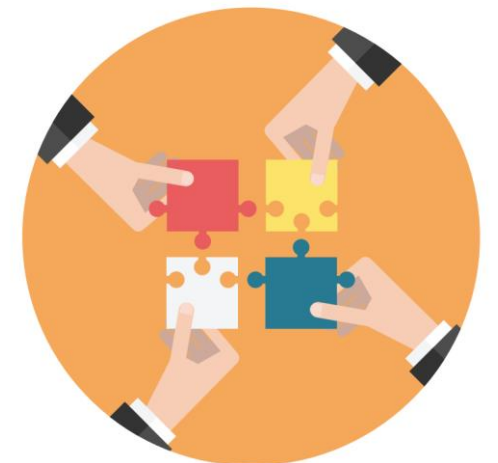
- Community Department Heads
- Engineers
- Public Works Staff



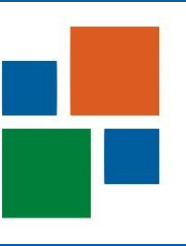


Implementation Considerations

- There is a project cost. Billed separately by third-party.
- Greater discounts are available when more communities participate in the flight.
- Schedule for project: Spring season aerial capture with Fall/Winter delivery of data. **(OPT IN DATE)**



Required Stakeholders



ROLE	EXPECTATIONS
Third-party Base Mapping Provider	<ul style="list-style-type: none">• Present community with a capture area and proposed budget• Conduct flight• Deliver finalized data
Community Stakeholder	<ul style="list-style-type: none">• Point person for community• Identifies specified capture area• Approves final data deliverable
Client Account Manager	<ul style="list-style-type: none">• Serve as the go-between for the provider and the community• Review capture area and budget with community stakeholder• Monitor the progress of the project for community
GIS Specialist	<ul style="list-style-type: none">• Receive data and ensure it is successfully loaded into GIS

Village of Schiller Park



BEFORE	AFTER
<p>Village staff had difficulty communicating the contrast between a current and proposed future floodplain, which was generated by third-party engineering firm, to elected officials and residents.</p>	<p>Village staff utilizes aerial imagery in an interactive story map to identify the different floodplains. The map can be also be presented and shared out to the public.</p>

“Having this quality of aerial imagery really helped us present a great visual for our Board. It makes the information our engineers gathered easy to understand.” *–Brian Bursiek, Assistant Village Manager*



Base Mapping



**Procuring quality data that drives
project outcomes.**